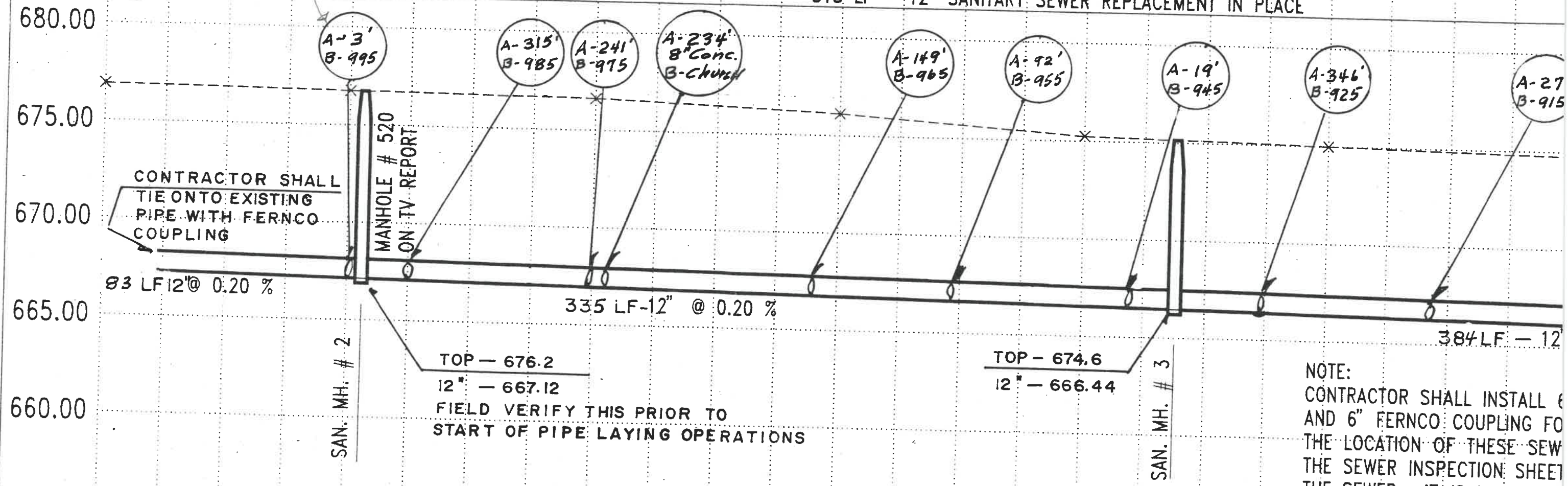


EXISTING SANITARY MANHOLE # 2
CONTRACTOR SHALL REMOVE AND REPLACE

EXISTING SANITARY MANHOLE # 3
CONTRACTOR SHALL REMOVE AND REPLACE

*A = Distance from Tee to Downstream M.H.
1995 Sewer Replacement*

818 LF - 12" SANITARY SEWER REPLACEMENT IN PLACE



NOTE:
CONTRACTOR SHALL INSTALL 6" AND 6" FERNCO COUPLING FOR THE LOCATION OF THESE SEWER INSPECTION SHEETS. THE SEWER INSPECTION SHEET IS INCLUDED IN THE SEWER. IT IS INCLUDED

995 Kenilworth